

EROC AKSESUAR



Vizyonumuz;

Her an, her yerde ve her aşamada Koşulsuz Müşteri Memnuniyetini esas almak, paydaşlarımızla birlikte kalitenin bir yaşam biçimi olarak, ilerleme ve gelişmenin alt yapısı olmasını sağlamak ve bu anlayışı yaygın hale getirmek, ERC AKSESUAR'ın Türk Ekonomisinde, iş hayatında, iş ahlaki ve kurum kültürü normlarında kıymet verecek illebet yaşayacak bir işletme olmasını amaçlayan ilkelere bağlı kalmak, tedarikçilerimizle hedef ortaklığımızı devam ettirmek, faaliyet alanlarımızda sürekli büyüyerek sektörümüzde lider firma konumumuzu kalıcı kılmaktır.

Vision;

Taking unconditional customer satisfaction as a basis at any time, anywhere and at every stage, together with our stakeholders, as a way of life of quality,

To ensure that progress and development are the infrastructure and to make this understanding widespread, Adhering to the principles that aim to make ERC Accessories an enterprise that will value forever in the Turkish Economy, business life, business ethics and corporate culture norms, to continue our target partnership with our suppliers, to grow continuously in our fields of activity.

İNDEKS / INDEX

MEKANİZMALAR / MECHANISMS	06-12
BAĞLANTI SAÇLARI / MOUNTING PLATES	13-16
MASA AYAKLARI / TABLE LEGS	18-19
SANDALYE AYAKLARI / CHAIR LEGS	20-24
METAL AYAKLAR / METAL LEGS	26-33
TOMBUL AYAKLAR / CHUBBY LEGS	36-37

AR



BAZA MEKANİZMASI / Bed Lifting Mechanism



⦿ Baza Mekanizması/
Bed Lifting Mechanism



BAZA BAŞLIK MONTAJ EKİPMANLARI /
BED Headboard Assembly Equipment



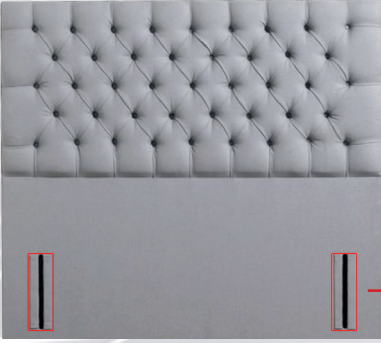
19 cm Baza Başlık Kızağı
19 cm Bed Headboard
Sliding Hinge



15 cm Baza Başlık Kızağı
15 cm Bed Headboard
Sliding Hinge

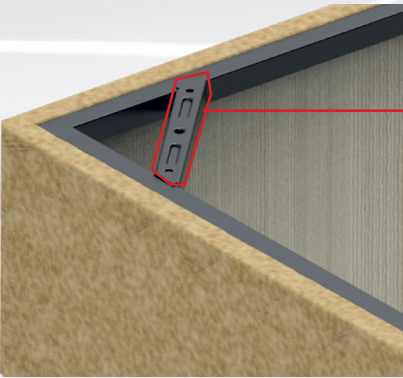


12 cm Baza Başlık Kızağı
12 cm Bed Headboard
Sliding Hinge



Baza Başlık Kızağı
Bed Headboard Sliding Hinge

BAZA AYAK MONTAJ SACI /
Bed Leg Mounting Sheet Metal



Baza Ayak Montaj Sac
Bed Leg Mounting Sheet Metal





KELEBEK MASA MEKANİZMASI / Table Extension Mechanism



Kelebek Masa Mekanizması/
Table Extension Mechanism



TRUVA MASA MEKANİZMASI /
Truva Table Mechanism

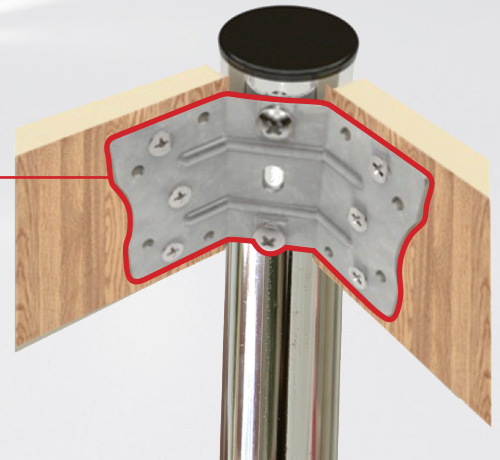
Truva Masa Mekanizması/
Truva Table Mechanism



MASA AYAK BAĞLANTI SACI /
Table Leg Mounting Plate



Masa Ayak Bağlantı Sacı/
Table Leg Mounting Plate





KOL MEKANİZMASI / Font Mechanism



● 27 cm Kol Mekanizması
27 cm Font Mechanism



● 22 cm Kol Mekanizması
22 cm Font Mechanism



● 20 cm Kol Mekanizması
20 cm Font Mechanism



● L24 Kol Mekanizması
L24 Font Mechanism



● Kol Mekanizması/
Font Mechanism

EKO SIRT MEKANİZMASI/
Eko Unified Font Mechanism



29 cm Eko Sirt Mekanizması
29 cm Eko Unified Font Mechanism



26 cm Eko Sirt Mekanizması
26 cm Eko Unified Font Mechanism



24 cm Eko Sirt Mekanizması
24 cm Eko Unified Font Mechanism



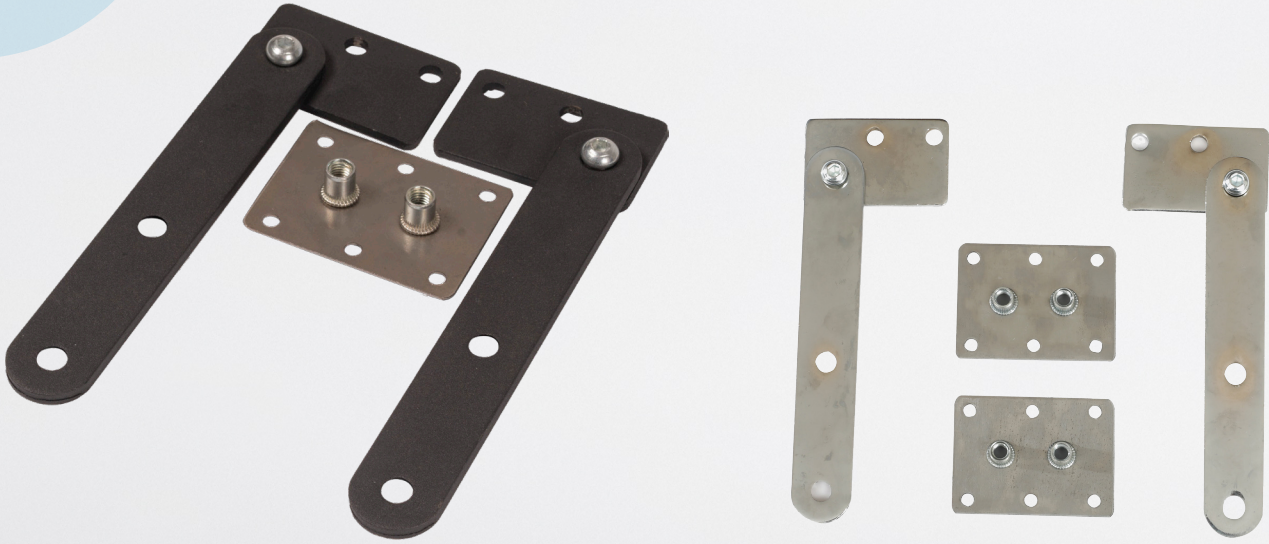
22 cm Eko Sirt Mekanizması
22 cm Eko Unified Font Mechanism

Eko Sirt Mekanizması/
Eko Unified Font Mechanism





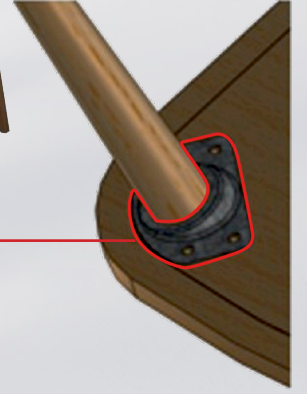
BARCELONA SIRT MEKANİZMASI / CSS Mechanism



Barcelona Sirt Mekanizması/
CSS Mechanism

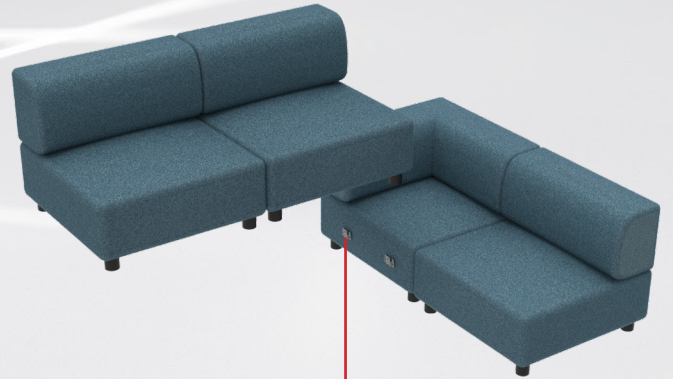


AÇILI SANDALYE AYAK BAĞLANTI /
Angled Chair Mounting Plate



Açılı Sandalye Ayak Bağlantı
Angled Chair Mounting Plate

KÖŞE BİRLEŞTİRME SACI /
Corner Connecting Plate



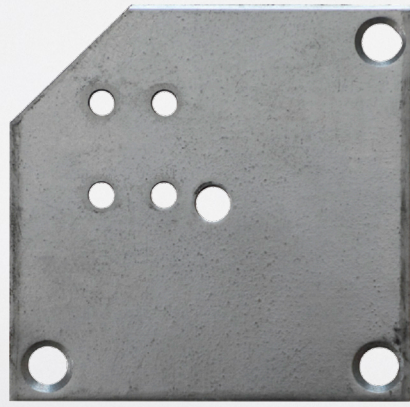
Köşe Birleştirme Sacı
Corner Connection Plate



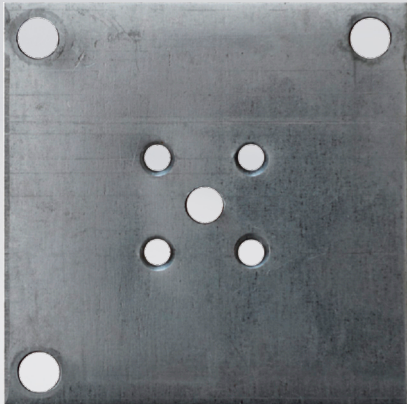
BAĞLANTI SACLARI / Mounting Plat



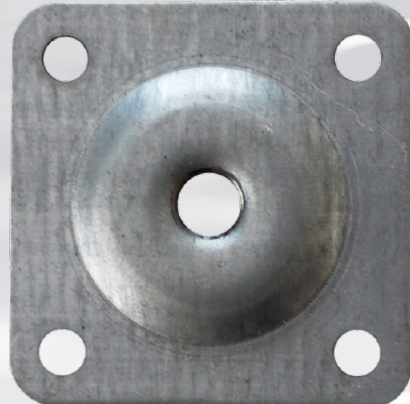
● Grawite 90x90 mm



● Orlando 90x90 mm



● Dolce 90x90 mm



● Kare Sac / Square Plate

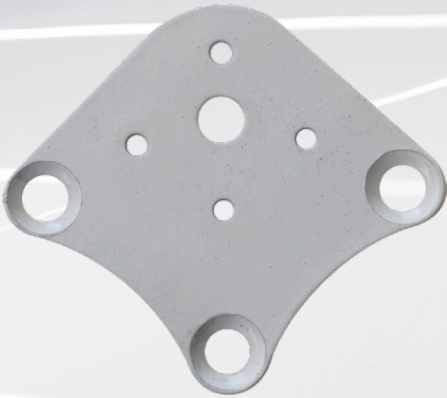
KÖŞE BAĞLANTI SAÇLARI /
Corner Connecting Sheet Metal



● Ahşap L Köşe Bağlantı Sacı
L Corner Mounted Plate for Wood



● Köşe Bağlantı Sacı
Table Corner Mounting Plate

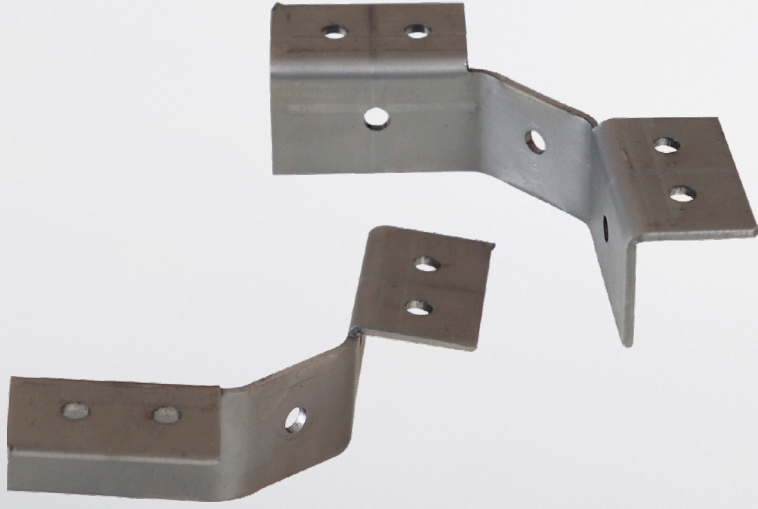


● Sehpa Ayak Bağlantı Sacı /
Coffee Table Leg Mounting Plate

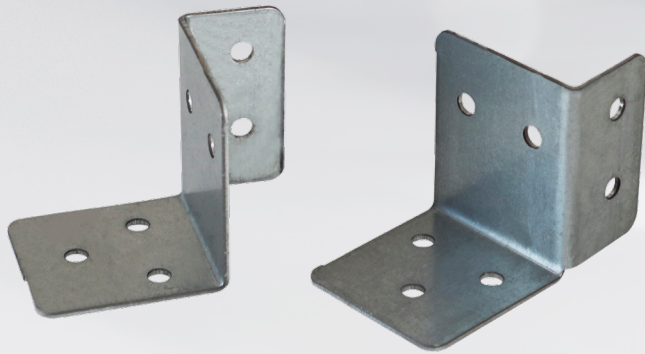


● Rattan

KÖŞE BAĞLANTI SAÇLARI / Corner Connecting Sheet Metal



● Kristal Köşe Birleştirme Sacı /
Crystal Corner Connecting Sheet Metal



● Raun Köşe Birleştirme Sacı/
Raun Corner Connecting Sheet Metal

MASA - SANDALYE SEHPA AYAKLARI

Masa sandalye ve sehpa ayakları;
ürünün yer ile bağlantısını sağlayan portatif parçalardır.
Farklı yapı ve özellikteki tasarımlarımız sizlerin
beğenisine sunulmuştur.



TABLE, CHAIR and COFFEE TABLE LEG

*Table, Chair and Coffee table legs; They are portable
parts that connect the product with the place
Our designs with different structures and features
are presented to you.*

MASA AYAKLARI / Table Leg



5 Mil Masa Ayağı/
Table Hairpin Legs
With Five Shafts



Ø25 Masa Ayağı/
Ø25 Table Leg



Ø32 Masa Ayağı/
Ø32 Table Leg



Zarif Masa Ayağı/
Zarif Table Leg



Piyano Masa Ayağı/
Piano Table Leg



Ø16 Masa Ayağı/
Ø16 Table Leg

MASA AYAKLARI/ Table Leg



Üstten Tablalı Masa Ayağı/
Table Leg With Mounting Plate



X Masa Ayağı/ X Table Leg



Konik Masa Ayağı/
Conical Table Leg



Ø60 Masa Ayağı/
Ø60 Table Leg

RENKLER/ COLORS



Altın/ Gold



Krom/Chrome



Siyah/Black

SANDALYE VE SEHPA AYAKLARI / Chair and Coffee Table Legs



Ø25 Sandalye Ayağı /
Ø25 Chair Leg



Zarif Sandalye Ayağı /
Zarif Chair Leg



Demonte Sandalye Ayağı /
Demounted Chair Leg



Piyano Sandalye ve Sehpa Ayağı /
Piano Chair and Coffee Table Leg



Sehpa Ayağı /
Coffee Table Leg



Tel Sehpa Ayağı /
Wired Table Leg



5 Mil Sehpa Ayağı /
Coffee Table Leg
with 5 Shaft

SANDALYE AYAKLARI/ Chair Leg



● Dmax-2 Sandalye /
Dmax-2 Chair Legs



● Beşgen Sandalye /
Pentagon Chair



● Piyano Sandalye Ayağı /
Piano Chair Legs



● Flamingo Sandalye Ayak /
Flamingo Chair Legs



● Lazer Demonte Sandalye Ayağı /
Lazer Demounted Chair Legs



● Bükümlü x Demonte Sandalye /
Demonte Bended X Chair

SANDALYE AYAKLARI/ Chair Leg



● Telli Sandalye Kafesi /
Wired Chair Leg



● Lale Sandalye /
Lale Chair



● Telli sandalye (borulu) /
Wired Chair (Pipe)



● Lazer X Sandalye /
lazer X Chair

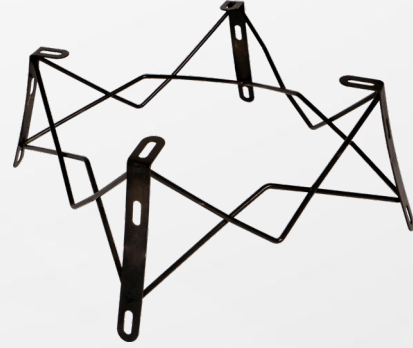
SANDALYE AYAKLARI / Chair Leg



Demonte 4 Bacak Sandalye Ayağı /
Demounted 4 Legged Chair Legs



Metal Konik Tek kafes Sandalye Ayak /
Metal Conical Single Wire Chair Leg



Tel kafes / Wired Cage



4 Bacak Sandalye Ayağı /
4 Legged Chair leg

METAL - KOLTUK AYAKLARI

METAL - SOFA LEGS

Yaşadığımız ortamlara estetik bir görünüm katan mobilyaların en önemli tamamlayıcı unsurlarından biri ayaklardır. Şık bir duruşa sahip olan bu ayaklar, farklı tasarım seçenekleri ile kataloğumuzda sizleri bekliyor.

One of the most important complementary elements of furniture that adds an aesthetic appearance to the environment is Legs. These legs, which have a stylish stance, are waiting for you in our catalog with different design options.

ERAKSESUAR



METAL AYAKLAR / Metal Legs



3 Borulu Kafkas Ayak /
3 Pipe Kafkas Leg



Flamingo Ayak /
Flamingo Leg



2 Borulu Kafkas Ayak /
2 Pipe Kafkas Leg



Orta Ayak /
Center Leg



4 Borulu Kafkas Ayak /
4 Pipe Kafkas Leg

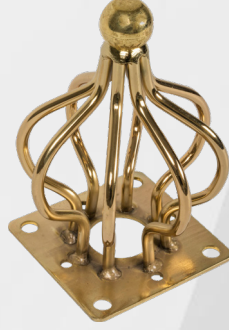


Petek Ayak /
Honeycomb Leg

METAL AYAKLAR/ Metal Legs



● Piyano Ayak (15 cm) /
Piano Leg (15 cm)



● İnci Ayak (15-18cm) /
Pearl Leg (15-18 cm)



● Merkür Ayak /
Mercury Leg



● Revina Arka Ayak /
Revina Rear Leg



● Demre Ayak /
Demre Leg



● Elda-1 Ayak /
Elda-1 Leg



● Dekor Ayak /
Decor Leg



● Tek Tel Flamingo Ayak /
Flamingo Leg (Single Wire)



● Dört Parmak Ayak /
Four Pipe Leg

METAL AYAKLAR / Metal Legs



Hilal Arka Ayak /
Crescent Rear Leg



Sanat Ayak /
Art Leg



Lukens Ayak /
Lukens Leg



Elda-2 Ayak /
Elda-2 Leg



Bilyalı Damla Ayak /
Ball Drop Leg



Damla Ayak /
Damla Leg



Piramit Ayak /
Piramit Leg



Platin Ayak /
Platin Leg



Marsilya ayak /
Marsilia Leg

METAL AYAKLAR/ Metal Legs



Profil Ayak /
Profile Leg



İki Parmak-1 Ayak /
Two Pipe-1 Leg



İki Parmak-2 Ayak /
Two Pipe-2 Leg



Drain Ayak /
Drain Leg



Berjer Ayak/
Tapered Leg



Titanyum Ayak /
Titanium Leg



Linda Ayak /
Linda Leg



Palmiye-1 Ayak/
Palm Leg-1



Palmiye-2 Ayak /
Palm Leg-2



METAL AYAKLAR / Metal Legs



Şömüne Ayak /
Fireplace Leg



Bella Ayak /
Bella Leg



Altın Tabanca Ayak /
Gun Shaped Leg



Diamond Ayak /
Diamond Leg



Karum Ayak /
Karum Leg



Volum Ayak /
Volume Leg



Fox Ayak /
Fox Leg

METAL AYAKLAR/ Metal Legs



● Kılıç Ayak /
Sword Leg



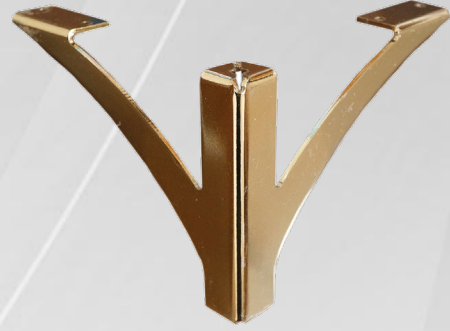
● Ø25 Berjer Ayak/
Ø25 Chair Leg



● Lama Ayak /
Lama Leg



● Martı Ayak /
Eagle Leg



● Monza Ayak /
Monza Leg

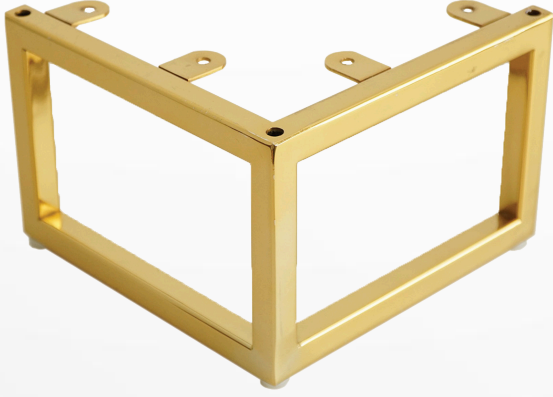


● Olimpos Ayak-1/
Olympus Leg-1



● Olimpos Ayak-2/
Olympus Leg-2

METAL AYAKLAR / Metal Legs



● Versace Ayak /
Versace Leg



● Versace Kol Yanı /
Versace Side Arm



● Diamond Kol Önü /
Diamond Front Arm



● Hilal Ayak
Crescent Leg

BERJER AYAKLAR/ Chair Leg



○ Berjer-1 Ayak/
Berjer-1 Leg



○ Vakko Ayak /
Vakko Leg



○ Berjer-2 Ayak /
Berjer-2 Leg

RC AKSESUAR

TOMBUL AYAKLAR CHUBBY LEGS



TOMBUL AYAKLAR / Chubby Legs



5 cm Tombul Ayak /
5 cm Chubby Leg



6 cm Tombul Ayak /
6 cm Chubby Leg



8 cm Tombul Ayak /
8 cm Chubby Leg



10 cm Tombul Ayak /
10 cm Chubby Leg

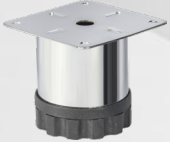


12 cm Tombul Ayak /
12 cm Chubby Leg

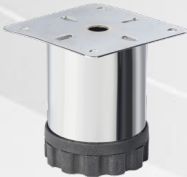


15 cm Tombul Ayak /
15 cm Chubby Leg

Ø60 mm Çapında Krom Kaplı Ayarlanabilir Bingolu Metal Mobilya Ayağı
Ø60 mm adjustable Chrome coated Bingol Metal Furniture leg



6 cm



8 cm



10 cm



12 cm



15 cm



20 cm



25 cm

TOMBUL AYAKLAR/ Chubby Legs

Ø51 mm Çapında Krom Kaplı Ayarlanabilir Bingolu Metal Mobilya Ayağı
Ø51mm adjustable Chrome coated Bingol Metal Furniture leg



Ø42 mm Çapında Krom Kaplı Ayarlanabilir Bingolu Metal Mobilya Ayağı
Ø42 mm adjustable Chrome coated Bingol Metal Furniture leg



NOTLAR

A series of horizontal dotted lines for writing notes, spanning the width of the page.

